



# FERTILL



Localise  
Fertilise  
liquid or solid



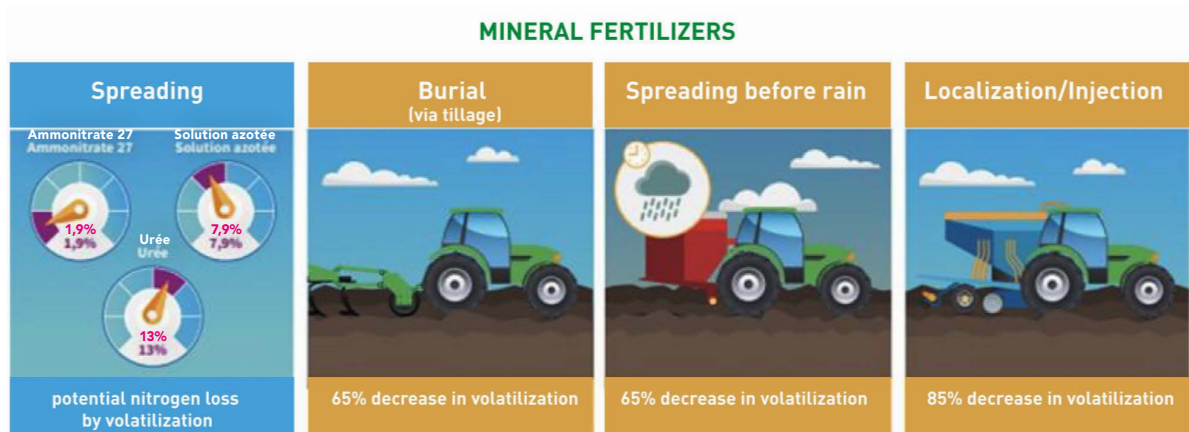


# FERTILL

## WHY LOCALISE ?

The fertilizing elements are placed close to the active zone (from the microbiological point of view), allowing the roots to reach them. Fertilisation is thus more effective.

- It reduces or even eliminates the risk of ammonia volatilisation.
- It reduces the risk of losses by runoff and erosion.
- It reduces the emanation of odours.
- It breaks the preferential flow channels (retreat slots).
- Avoid burning vegetation



Source: l'action agricole picarde



The right  
**DOSE**



At the right  
**TIME**



At the right  
**PLACE**

## 1 UNIT 4 POSSIBILITIES

The frame as well as the inter-rows are modular.

In order to adapt to the different widths and inter-rows of precision planters, we have studied 4 fertilisation configurations, which can be upgraded.

- **simple** unit  
1 inter-row  
on 2



- **simple** unit  
every  
inter-row



# THE UNIT

Element on pneumatic parallelogram with control BOX - Differential pressure adjustment (e.g.: overall pressure setting and different pressure behind the tractor wheels)

- Flat opening discs, finger press roller with depth/angle adjustment
- Tooth spring safety (mechanical non-stop)
- Liquid and/or solid injection



## FERTILISATION KITS

### ■ Regulation LiquidXConnect

- 2 models, 15 or 75 l/mn (combinable)
- Fittings, couplings, direct battery socket, high/low position sensor
- GPS and on/off switch
- Software for Android
- 1 pump: tablet 8", with cabin mount bracket and a carrying bag
- 2 pumps: tablet 10", with cabin mount bracket, a carrying bag and an electronic connexion case



App on tablet for fertilization management



### ■ Tank



Available capacity 700, 1100 (rinse tank 125l), 1200 (rinse tank 135l), 1500 (rinse tank 150l), 1850 two product (750+1050l, rinse tank 125l), 2200L (rinse tank 250l)  
Delivered with hand-washing tank, homologated NF EN ISO 4254-6

### ■ Liquid fertilisation kit

Wilger ball flow indicators  
Included in the kit:

- filter
- pressure gauge
- manifold
- one set of nozzle
- 8m hose for connexion
- additional connector hose under the tractor



### ■ Solid fertilisation kit

- manifold Ø 100
- 1 hose per unit
- air release
- assembly on Fertill



## FRAME

### Mounted, telescopic, foldable, trailed

From 3 to 12m, (3m on road)  
& stand for liquid tank



535 rue Pierre Levasseur - CS 60263  
44158 ANCENIS - FRANCE

T. +33 (0) 2 51 14 14 40

[www.agrisem.com](http://www.agrisem.com)  
[agrisem@agrisem.com](mailto:agrisem@agrisem.com)

*#YellowTeam*



Your Dealer: